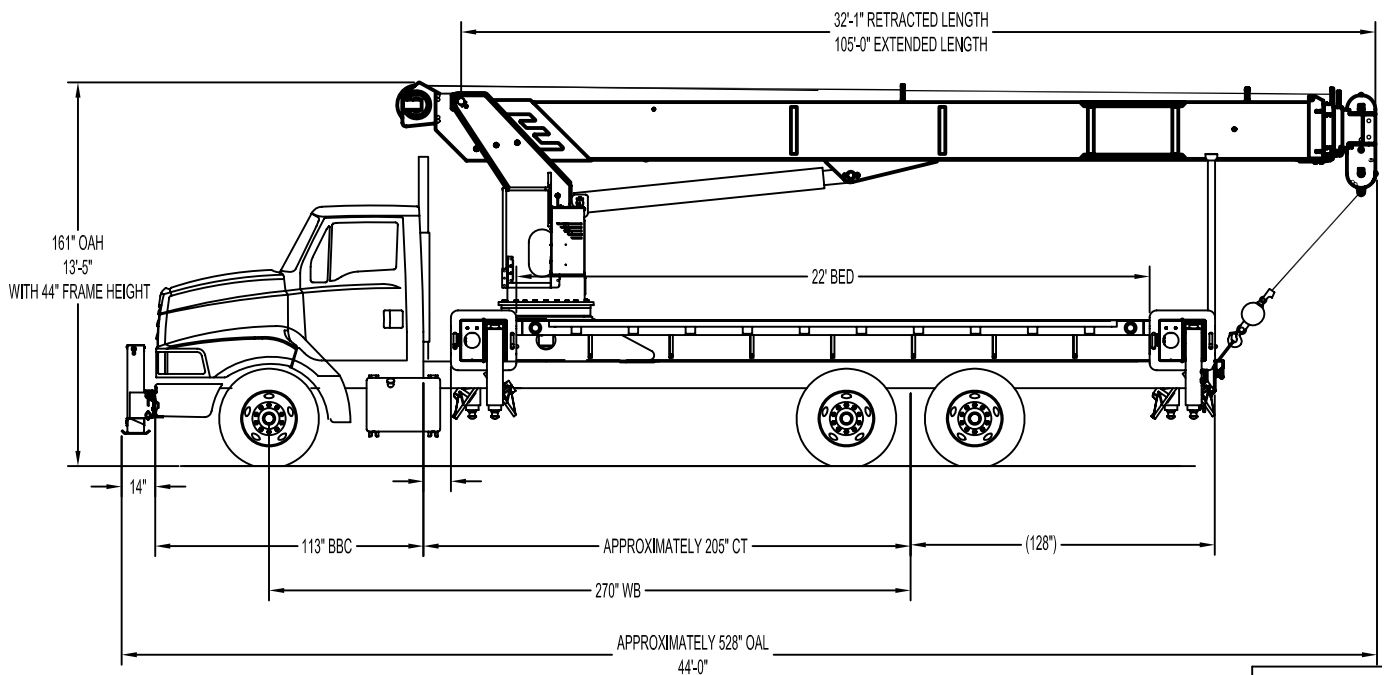


### H32105F SIDE VIEW DIAGRAM



- |                                  |                                     |                                 |                  |
|----------------------------------|-------------------------------------|---------------------------------|------------------|
| • <b>Maximum Vertical Reach</b>  | 162' / 49,4 m                       | • <b>Powered Boom Sections</b>  | 4                |
| • <b>Working Area</b>            | 180 Degrees Standard (360 Optional) | • <b>Overall Height</b>         | 13'5" / 4,1 m    |
| • <b>Lifting Capacity</b>        | 64,000 lbs / 29 030 kg              | • <b>Operator Controls</b>      | Rotating Standup |
| • <b>Boom Length</b>             | 105' / 32 m                         | • <b>Outrigger Type Front</b>   | Out-Down         |
| • <b>Crane Weight (Standard)</b> | 31,400 lbs / 14 243 kg              | • <b>Outrigger Spread Front</b> | 20' / 6 m        |
| • <b>Jib Lengths</b>             | 26', 26-45' / 8, 8-14 m             | • <b>Outrigger Type Rear</b>    | Out-Down         |
| • <b>Winch Bare Drum Pull</b>    | 12,800 lbs / 5806 kg                | • <b>Outrigger Spread Rear</b>  | 20' / 6 m        |

## TECHNICAL SPECIFICATIONS

**Crane Capacity:** 64,000 lbs at 5' load radius.

**Maximum Tip Height:** 117' height (162' with optional 45' jib)

**Control Console:** Rotating turret single operator standup control station equipped with four single axis control levers for the main crane controls. Operator station includes LMI display, bubble level gauge, engine start/stop switch, signal horn button, variable speed throttle switch, lifting capacity chart, range diagram chart, boom angle indicator, system pressure gauge, 12V DC power source, and cup holder. Independent ground level electric operated outrigger controls.

**Boom:** Four-section fully proportional, high strength steel plated rectangular tube sections. A maximum boom tip height of 117' mounted on a truck. The boom nose contains one floating upper sheave and three lower sheaves. Assembly includes heavy-duty cylinder fittings, pivot pins, and replaceable wear pads.

**Winch:** Mounted at the base of the boom for a long fleet angle and flat level spooling of cable. Winch is driven by a planetary reducer and powered by a hydraulic motor. Burst-of-speed winch provides increased line speed. The winch brake is spring applied, pressure release design. Supplied with 425' of 9/16" diameter rotation resistant wire rope with a single line pull of 9,060 pounds, and a downhaul ball with swivel hook for single part line.

**Load Moment Indicator System:** System senses hoist cylinder pressures, boom length and boom angle with hydraulic function lockout. The display console is equipped with a bar graph showing crane utilization, boom angle or boom length, a mode select controls for main boom and jib operation, and an anti-two block with an audio/visual warning and shut-off functions to limit hook-boom point contact.

Elliott Equipment Company reserves the right to change the specification of any unit at any time without prior notice. This brochure is only a statement of general specifications on the date of this publication. For more detailed info on specific Elliott trucks go to [www.elliottequip.com](http://www.elliottequip.com)

**Outriggers:** Two sets of out and down overframe outriggers with 20' span. Outriggers are configured for full span or mid span operation. Outriggers equipped with ball socket aluminum removable pads that stow on vertical outrigger legs.

**Frame:** Full length, all welded rigid 4-plate design sub-frame. Sub-frame allows for bolt-on addition of 22' bed wings, with top plate of subbase serving as a portion of the bed deck, to form a three-piece bed.

**Turret:** Reverse offset turret is one-piece weldment. Turret rotates on large diameter ball bearing.

**Rotation:** Hydraulic motor drives turret through double reduction planetary swing drive for 372-degree non-continuous rotation. The swing drive system has a spring applied, pressure release brake.

**Lift:** One double-acting long stroke cylinder provides smooth and stable boom elevation. Holding valve prevents boom from falling in event of hose failure.

**Boom Extension:** Incorporates a 2-stage hydraulic extension cylinder, attached to the largest boom section, with a proportional cable extension system driving the outermost sections.

**Hoses:** All high pressure hoses are wire braid reinforced with a minimum safety factor of 4 to 1.

**Cylinders:** All cylinders use microhoned cylinder tubing, chrome shafts, top grade packing and protective rod wipers. Cylinder-mounted holding valves provided on all load-holding cylinders.

**Hydraulic System:** Equipped with cable-shift PTO, piston pump, SAE O-ring face seals on pressure lines, and a 10-micron return line filter. The control valve distributes all flow to hoist system, swing circuit, and other crane functions. System is closed center type.

**Oil Tank Capacity:** 120 gallon mounted to truck frame on roadside.

**Cab Equipment:** PTO cable with indicator lights installed in truck cab. U/L approved 5:BC dry chemical fire extinguisher installed in truck cab.

**Operators Manual & Video:** Two CD copies and one hard copy of operation, maintenance, safety and parts manual provided with each unit. Operational and safety video provided at delivery.

**Installation:** Unit installed on chassis, painted, system and tank filled with oil, tested, inspected, and ready to operate.

**Standard Paint:** Paint turret and boom white, outriggers red, and bed and boxes black. Top of bed painted with black nonskid surface.

**Bumper:** Bureau of Motor Carrier Safety rear bumper.

**Weight:** Approximately 31,400 lbs. with 22' steel-floor bed less truck.

**Truck Chassis Required:** Approx. 204" C.A. RBM 3,300,000 in-lb. per rail, 20,000 lb. front axle and 40,000 lb. GVWR required. Trucks must have front frame extension, 12V electrical system with high capacity alternator, cab clearance stop/tail/backup lights, and I.D. lamps. Recommended GVWR is minimum for BoomTruck with flatbed only. Contact factory when additional equipment is to be added.

**Options:**

26' Fixed or 45' Telescopic Jib.

Radio Remote Controls.

Gravity-Leveled Steel Basket.

Tool Box Configurations.

Front Jack for 360 Degree Crane Operation.

Much more...

**LOAD CHART - MAIN BOOM, FULL-SPAN OUTRIGGERS**



**MODEL H3200**

**105-ft BOOM**

**MAIN BOOM LOAD RATINGS WITH FULLY EXTENDED OUTRIGGERS**

**MAIN BOOM LOAD RATINGS**

LOAD RATINGS IN lbs WITH OUTRIGGERS AND STABILIZERS EXTENDED														
LOAD RADIUS IN FEET	LOADED BOOM ANGLE	31-ft	LOADED BOOM ANGLE	A 46-ft	LOADED BOOM ANGLE	B 58-ft	LOADED BOOM ANGLE	C 70-ft	LOADED BOOM ANGLE	D 82-ft	LOADED BOOM ANGLE	E 94-ft	LOADED BOOM ANGLE	F 105-ft
5	80	64,000												
6	78.5	55,000												
8	74.5	44,000												
10	70.5	37,000												
12	66.5	32,000	75	32,000	78.5	29,000								
14	62.5	29,200	72	28,000	76.5	26,000	79.5	24,000						
16	58	24,700	69.5	24,100	74.5	23,500	77.5	20,500	80	18,000				
18	53	21,300	66.5	21,800	72	21,000	76	19,100	78.5	17,000	80	15,000		
20	48	18,500	63.5	19,700	70	19,500	74	18,000	77	16,000	79	13,600	80	11,000
25	32.5	13,200	56	14,600	64.5	15,700	69.5	14,900	73.5	13,500	75.5	11,800	77.5	10,500
30			47.5	11,500	58.5	12,500	65	11,700	69.5	11,700	72.5	10,200	74.5	9,500
35			37.5	9,300	52.5	10,300	60	9,500	65.5	9,500	69.5	9,100	72	8,500
40			24.5	6,500	46	8,500	55.5	7,900	61.5	7,700	66	7,700	69	7,600
45					37.5	6,600	50	6,800	57.5	6,600	62.5	6,950	66	6,350
50					27.5	5,150	44	5,450	53	5,600	59	5,700	63	5,300
55							37.5	4,300	48	4,500	55	4,600	59.5	4,300
60							29	3,400	43	3,600	51	3,700	56	3,450
65							17	2,650	37	2,850	46.5	2,950	52.5	3,000
70									30	2,200	42	2,350	49	2,350
75									21	1,650	37	1,800	44.5	1,850
80											30.5	1,000	40.5	1,400
85											23.5	600	35.5	1,000
90													30	650
0		9,000	0	5,500	0	3,200	0	1,900						

DEDUCTIONS FOR STOWED JIB (lbs)	850	600	450	400	350	300	250
	550	350	300	250	200	150	

1-PART LINE	2-PART LINE	3-PART LINE	4-PART LINE	5-PART LINE	6-PART LINE	7-PART LINE
MAX PULL: 9,060 lbs	18,120 lbs	27,180 lbs	36,240 lbs	45,300 lbs	54,360 lbs	64,000 lbs

**JIB LOAD RATINGS**

LOAD RATINGS IN lbs WITH OUTRIGGERS AND STABILIZERS EXTENDED						
LOAD RADIUS IN FEET	LOADED BOOM ANGLE	26-ft FIXED LENGTH JIB		26-45 ft EXTENDABLE JIB		
		26-ft JIB	LOADED BOOM ANGLE	26-ft JIB RETRACTED	LOADED BOOM ANGLE	45-ft JIB EXTENDED
30	77.5	4,750	77.5	4,500		
35	75	4,350	75	4,100	77	3,200
40	73	3,950	73	3,700	75	3,000
45	70.5	3,450	70.5	3,200	73	2,800
50	68	3,050	68	2,800	71.5	2,700
55	66	2,650	66	2,400	69.5	2,600
60	63.5	2,350	63.5	2,100	67.5	2,500
65	61	2,050	61	1,800	65.5	2,100
70	58	1,850	58	1,600	63	1,800
75	55.5	1,650	55.5	1,300	61	1,600
80	52.5	1,100	52.5	850	58.5	1,400
85	49.5	750	49.5	500	56.5	1,200
90					54	1,100
95					51.5	850

**NOTICE**

- DO NOT DEADHEAD LINE BLOCK AGAINST BOOM TIP WHEN EXTENDING BOOM.
- KEEP AT LEAST 5 WRAPS OF LOADLINE ON THE WINCH DRUM AT ALL TIMES.
- USE ONLY 9/16" DIAMETER WIRE ROPE, AS SPECIFIED BELOW, WITH THE PROPER BREAKING STRENGTHS LISTED.
- ANTI-TWO-BLOCK SYSTEM MUST BE IN GOOD OPERATING CONDITION BEFORE OPERATING CRANE. SEE OPERATION & SAFETY MANUAL.

DEDUCTIONS FOR STOWED EXTENDABLE JIB (lbs)

DEDUCTIONS FOR STOWED FIXED LENGTH JIB (lbs)

ELLIOTT EQUIPMENT CO. SUPPLIED LOADLINE EQUIPMENT DEDUCTIONS:  
 DOWNHAUL WEIGHT .....180 lbs  
 ONE SHEAVE BLOCK.....375 lbs  
 TWO SHEAVE BLOCK.....640 lbs  
 THREE SHEAVE BLOCK.....870 lbs  
 AUXILIARY SHEAVE.....100 lbs

9/16" - SPIN RESISTANT (5:1 S.F.)  
 45,300-lbs. BREAKING STRENGTH

CRANE MEETS ASME B30.1 REQUIREMENTS AT TIME OF MANUFACTURE

DO NOT PAINT OVER/IN LABELS 111990 08/07



Elliott Equipment Company Phone: 402-592-4500  
 4427 South 76th Circle Fax: 402-592-4553  
 Omaha, NE 68127 Email: sales@elliottequip.com

**Built for You.**  
 www.elliottequip.com

**LOAD CHART - MAIN BOOM, FULL-SPAN OUTRIGGERS**



**MODEL H3200 105-ft BOOM**

**MAIN BOOM LOAD RATINGS WITH OUTRIGGERS AT MID-SPAN POSITION**

**MAIN BOOM LOAD RATINGS**

LOAD RATINGS IN lbs WITH OUTRIGGERS AND STABILIZERS EXTENDED

LOAD RADIUS IN FEET	LOADED BOOM ANGLE	31-ft	A	LOADED BOOM ANGLE	B	LOADED BOOM ANGLE	C	D	LOADED BOOM ANGLE	E	LOADED BOOM ANGLE	F		
		46-ft	58-ft	70-ft	82-ft	94-ft	105-ft							
5	80	64,000												
6	78.5	55,000												
8	74.5	44,000												
10	70.5	37,000												
12	66.5	32,000	74.5	32,000	78.5	29,000								
14	62	27,000	72	28,000	76.5	26,000	79	24,000						
16	58	19,900	69	20,500	74	22,800	77.5	20,500	80	18,000				
18	53	15,200	66.5	15,900	72	17,900	75.5	16,800	78.5	17,000	80	15,000		
20	48	12,000	63.5	12,650	69.5	14,550	73.5	13,400	76.5	13,700	79	13,600	80	11,000
25	34	7,100	56.5	7,650	64	9,300	69.5	8,300	73	8,550	75.5	8,750	77.5	8,800
30			48	4,800	58.5	6,350	65	5,400	69	5,600	72	5,800	74	5,800
35			38	2,950	52	4,450	60	3,500	65	3,700	68.5	3,950	71	4,000
40			24.5	1,700	45	3,200	55	2,300	61	2,400	65	2,600	68	2,600
45					37	2,150	49.5	1,250	56.5	1,400	61.5	1,550	65	1,600
50					27	1,400	43.5	500	52	650	58	750	61.5	800
0		4,150	0	850	0	650								

**JIB LOAD RATINGS**

LOAD RATINGS IN lbs WITH OUTRIGGERS AND STABILIZERS EXTENDED

LOAD RADIUS IN FEET	LOADED BOOM ANGLE	26-ft FIXED LENGTH JIB		26-45 ft EXTENDABLE JIB		
		26-ft JIB	LOADED BOOM ANGLE	26-ft JIB RETRACTED	LOADED BOOM ANGLE	45-ft JIB EXTENDED
30	77.5	4,750	77.5	4,500		
35	75	3,850	75	3,600	77	3,200
40	72.5	2,550	72.5	2,300	75	2,850
45	69.5	1,500	69.5	1,250	72.5	1,750
50	67	750	67	500	70.5	1,050
55					68	500

**NOTICE**

- DO NOT DEADHEAD LINE BLOCK AGAINST BOOM TIP WHEN EXTENDING BOOM.
- KEEP AT LEAST 5 WRAPS OF LOADLINE ON THE WINCH DRUM AT ALL TIMES.
- USE ONLY 9/16" DIAMETER WIRE ROPE, AS SPECIFIED BELOW, WITH THE PROPER BREAKING STRENGTHS LISTED.
- ANTI-TWO-BLOCK SYSTEM MUST BE IN GOOD OPERATING CONDITION BEFORE OPERATING CRANE. SEE OPERATION & SAFETY MANUAL.

DEDUCTIONS FOR STOWED JIB (lbs)	850	600	450	400	350	300	250
	550	350	300	250	200	150	150

DEDUCTIONS FOR STOWED EXTENDABLE JIB (lbs)  
DEDUCTIONS FOR STOWED FIXED LENGTH JIB (lbs)

1-PART LINE	2-PART LINE	3-PART LINE	4-PART LINE	5-PART LINE	6-PART LINE	7-PART LINE
MAX PULL: 9,060 lbs	18,120 lbs	27,180 lbs	36,240 lbs	45,300 lbs	54,360 lbs	64,000 lbs

ELLIOTT EQUIPMENT CO. SUPPLIED LOADLINE EQUIPMENT DEDUCTIONS:  
 DOWNHAUL WEIGHT .....180 lbs  
 ONE SHEAVE BLOCK.....375 lbs  
 TWO SHEAVE BLOCK.....640 lbs  
 THREE SHEAVE BLOCK.....870 lbs  
 AUXILIARY SHEAVE.....100 lbs

9/16" - SPIN RESISTANT (5:1 S.F.)  
45,300-lbs, BREAKING STRENGTH

CRANE MEETS ASME B30.5 REQUIREMENTS AT TIME OF MANUFACTURE

DO NOT PAINT OVER ANY LABELS 1113890 083007

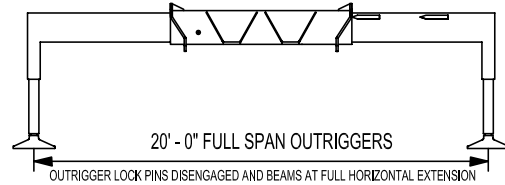
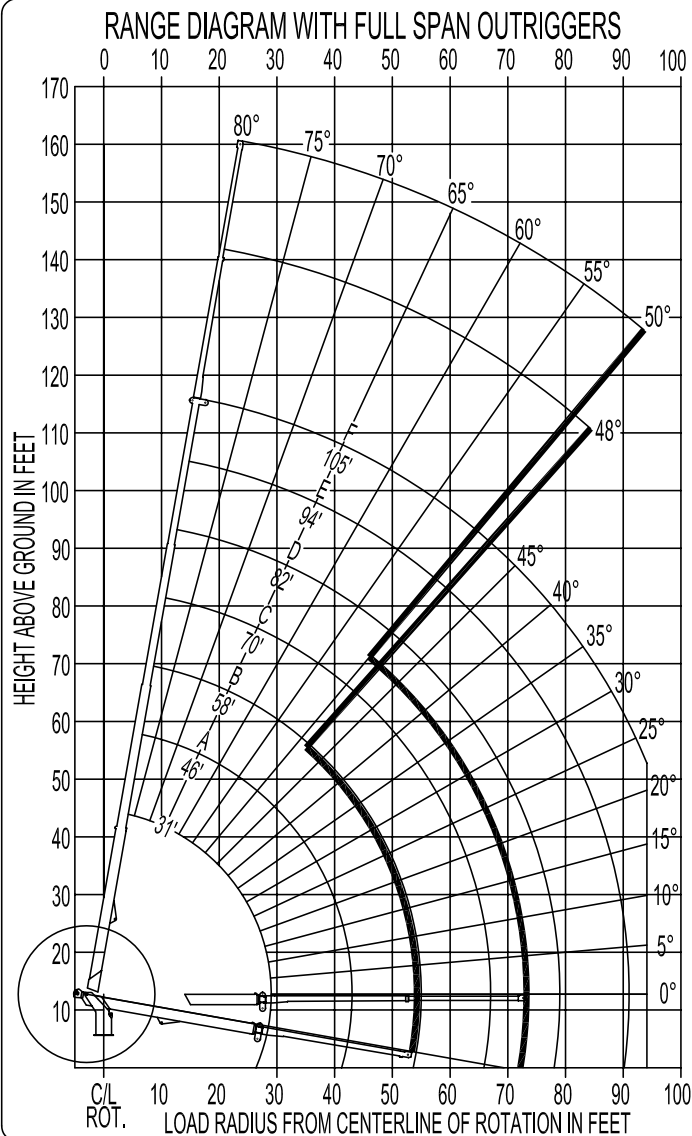


Elliott Equipment Company  
4427 South 76th Circle  
Omaha, NE 68127

Phone: 402-592-4500  
Fax: 402-592-4553  
Email: sales@elliottequip.com

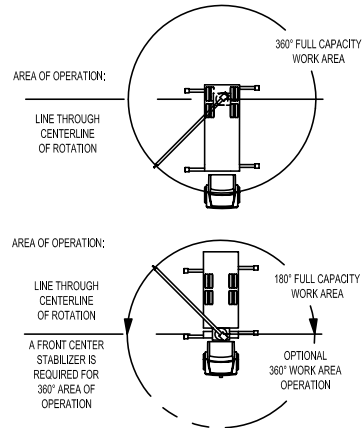
**Built for You.**  
www.elliottequip.com

**RANGE CHART - MAIN BOOM + JIB, FULL-SPAN OUTRIGGERS**



**NOTE:**

1. Operate jib by radius when main boom is full extended. Increase boom angle if necessary to maintain load radius.
2. When boom is retracted, operate jib by boom angles. Do not exceed any rated jib capacities at reduced boom lengths.
3. Capacities do not exceed 85% stability.
4. Load ratings above bold line are structurally limited.
5. Personnel handling is allowed only with full span outriggers.
6. Boom load ratings are based on loaded boom radius. Loaded boom angles are given as reference only.



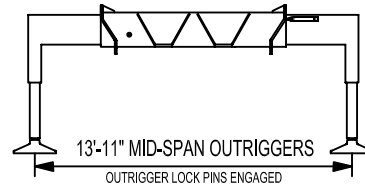
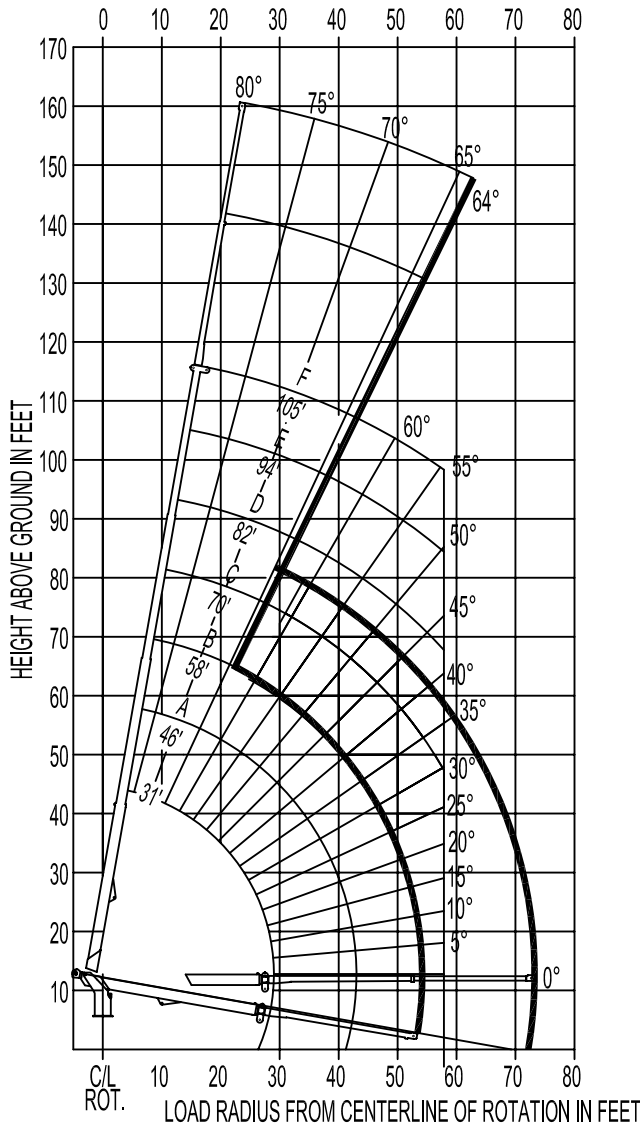
DO NOT PAINT OVER ANY LABELS 1085120 042705

**RANGE CHART - MAIN BOOM + JIB, MID-SPAN OUTRIGGERS**



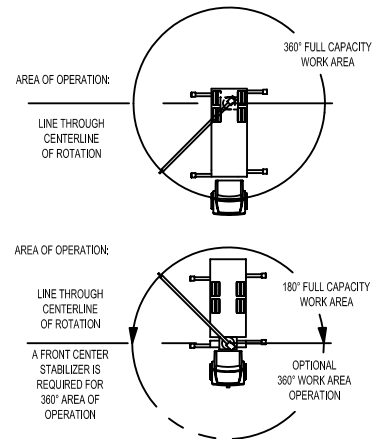
**MODEL 3200 105-ft BOOM**

**RANGE DIAGRAM WITH OUTRIGGERS AT MID-SPAN POSITION**



**NOTE:**

1. Operate jib by radius when main boom is full extended. Increase boom angle if necessary to maintain load radius.
2. When boom is retracted, operate jib by boom angles. Do not exceed any rated jib capacities at reduced boom lengths.
3. Capacities do not exceed stability based on ISO 4305-1991.
4. Load ratings above bold line are structurally limited.
5. Personnel handling is allowed only with full span outriggers.
6. Boom load ratings are based on loaded boom radius. Loaded boom angles are given as reference only.



DO NOT PAINT OVER ANY LABELS 1085120 042705

**TRUCK CHASSIS SPECIFICATIONS**

	H32105F BoomTruck
Wheelbase (WB)	268" / 681 cm
Cab to Axle (CA)	204" / 518 cm
Cab to End of Frame (EOF)	334" / 594 cm
Frame Section Modulus	30.0 in3-110,000 psi
Front Axle Gross Weight Rating	20,000 lb / 9071 kg
Rear Axle Gross Weight Rating	40,000 lb / 18 143 kg
Integral Front Frame Rails	Required for Front Stabilizer

Chassis data is minimum general requirements-not for engineering.  
 Actual dimensions and truck data will depend on truck selection and axle configuration.  
 \*Minimum chassis weight is required to meet 85% stability requirements.

**OPTIONS**



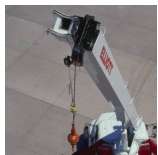
**Radio Remote Control**

Interference protected radio remotes let you get closer to your work and have full control over your machine. Includes battery charging feature and optional LMI screen.



**Tool Boxes**

Optional tool boxes and bed storage can accommodate any storage need for tools, work materials and more.



**Pin-On Jib Attachments**

One piece & two piece telescoping or fixed jibs that stow on the side of the boom for easy placement while on the worksite.



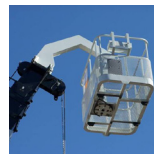
**Hook Block for Multi-Part Line**

Elliott can install a 2-3 part hook block or a 4 part-hook block to improve lifting capabilities. The block can be stored at the rear of the bed.



**Continuous Boom Rotation**

Add the convenience of 360 degree continuous rotation by adding a special boom rotation bearing for swinging without stops.



**Gravity Levelled Basket**

Elliott's pin-on work platform pins onto the boom for easy installation and removal. Gravity leveling and mechanical rotation makes it a great accessory for any worksite.



**Hydraulic Pole Claw**

Combine Elliott's crane capabilities with a hydraulic pole claw to lift and position poles and pylons with a single machine.



**Body Mounted Hose Reels and Circuits**

Let us work with you to customize your tool compatibility by adding hose reels or hydraulic circuits to the crane bed.